

## R390 LINE FILTER REPLACEMENT

Frank Hughes July 2024

I used CORCOM because Tisha Hayes wrote about them long ago, said they were good.

### NOTES:

- The R390 schematic for FL101 filter does not match the way my R390 was built.

AC line in is on pins "A", "B".

- The CORCOM 3EQ1 filter was found on ebay. Many listed there, both new and used.

I picked the 3EQ1 because of the dimensions - it fits in the space of the original FL101.

- The 3EQ1 is rated at 3A. I do not know how much current a standard R390 draws.

I replaced the 6082's with a solid state circuit from Tom, N3LL, thus reducing the heat and current.

- Both CORCOM line/load connections are identical circuits, so just pick one to be Neutral, the other will be L1.

- I connected the wire on FL101 pin "A" to the load side of the CORCOM that I picked to be the Neutral.

- I connected the 3 wires on FL101 pin "B" to the other load side, as I wanted L1 to be switched.

- Connected ground lug on the CORCOM case to the ground wire from the FL101.

- I cut the SPRAGUE FL101 apart, found it to be full of some gray material, might be Asbestos.

- Used a hole saw to cut out the FL101 electrical connector, so it could be re-tained for use w/ the new CORCOM filter. Neutral from the FL101 AC input connector goes to the line in on the CORCOM filter Neutral, L1 to the other

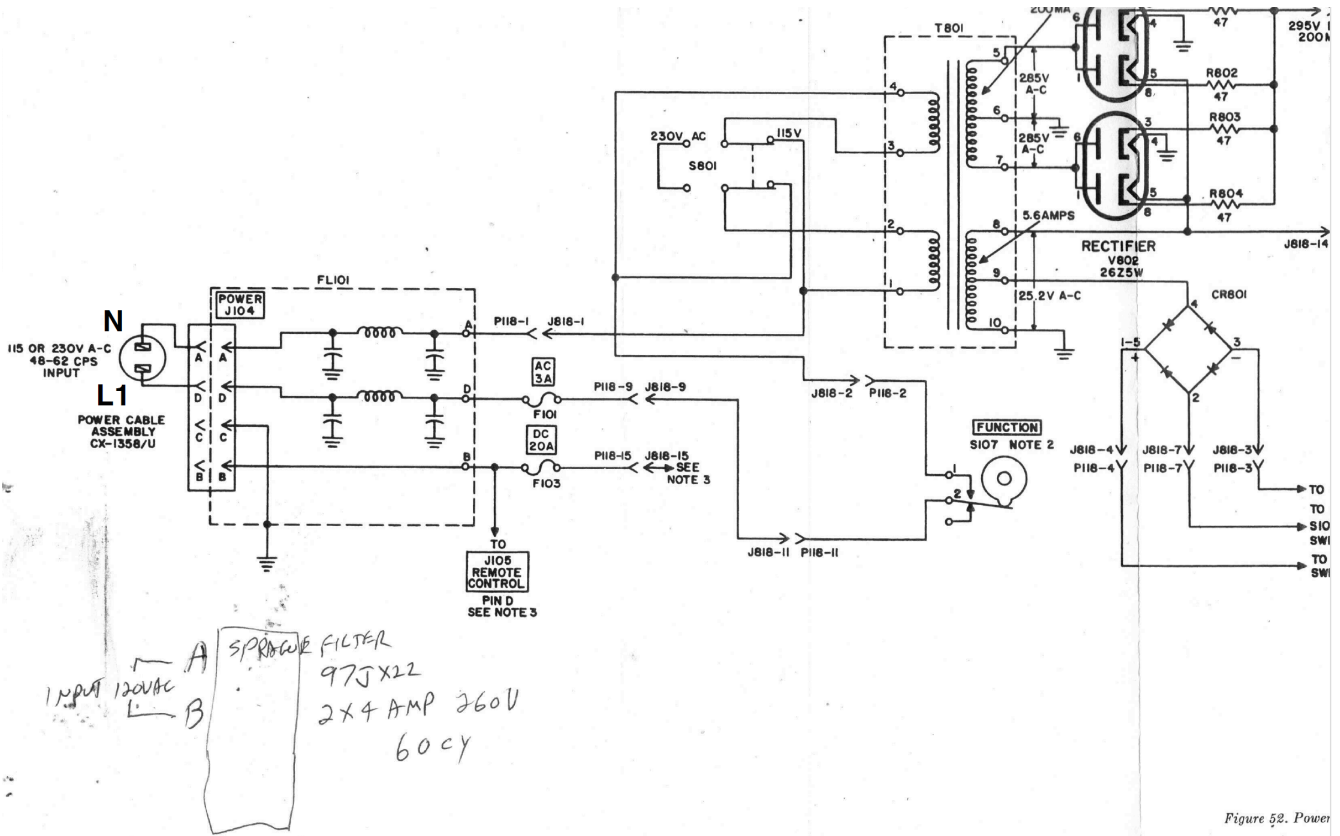


Figure 52. Power

3EQ1

LINE



-10°C  
.40°C

F7258

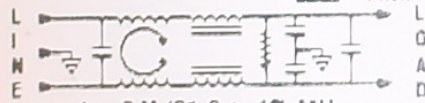
3A, 120/250 V ~ 50 - 60HZ

3A/40°C, 250V ~



EW133200

HMF



L - 2 X (31.8 ± .40) MH

C - 2 X .54 UF (X2) SH

- 2 X .003 UF (Y)

R - 270 KΩHMS



corcom

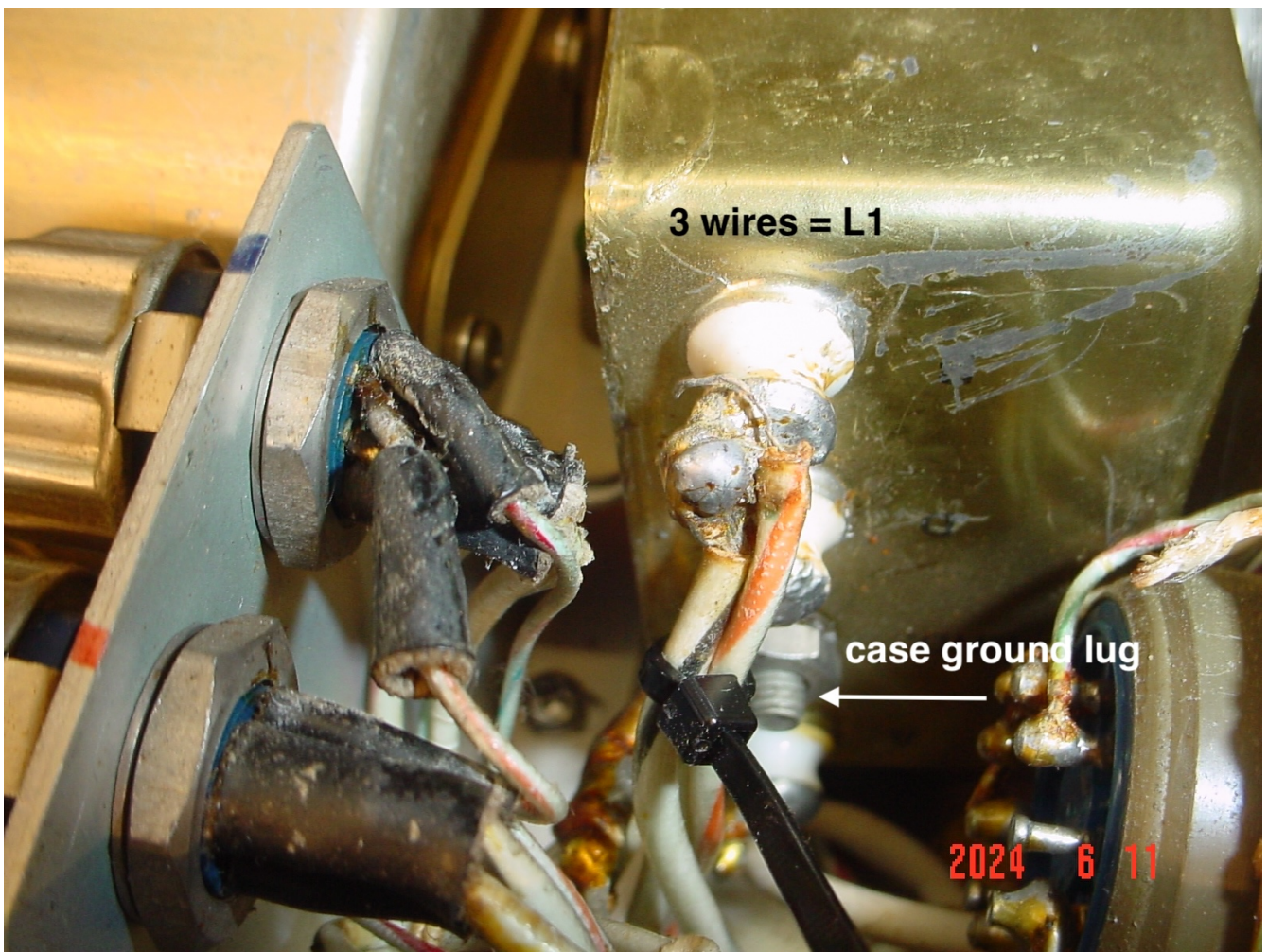
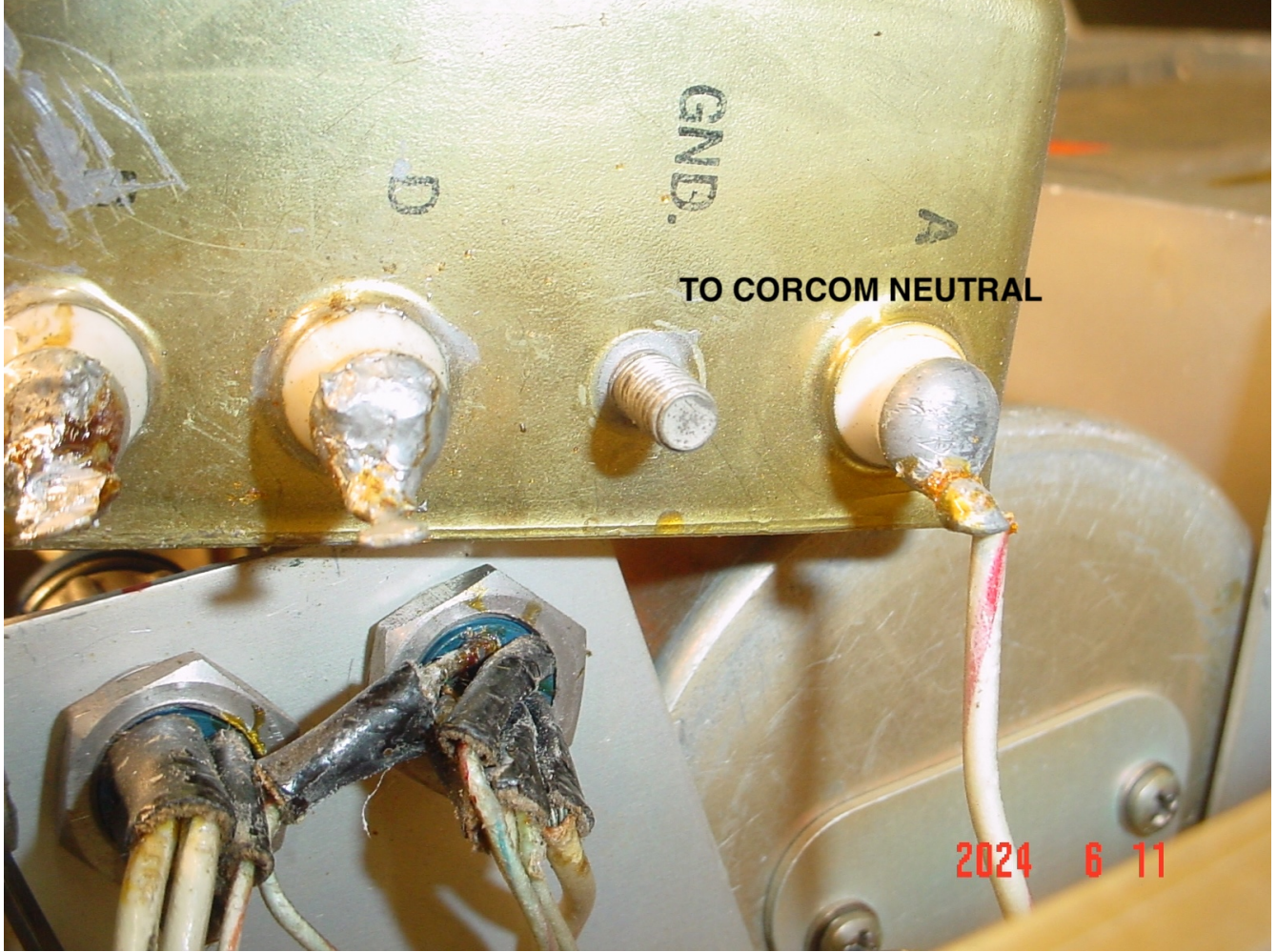
EMI  
FILTER

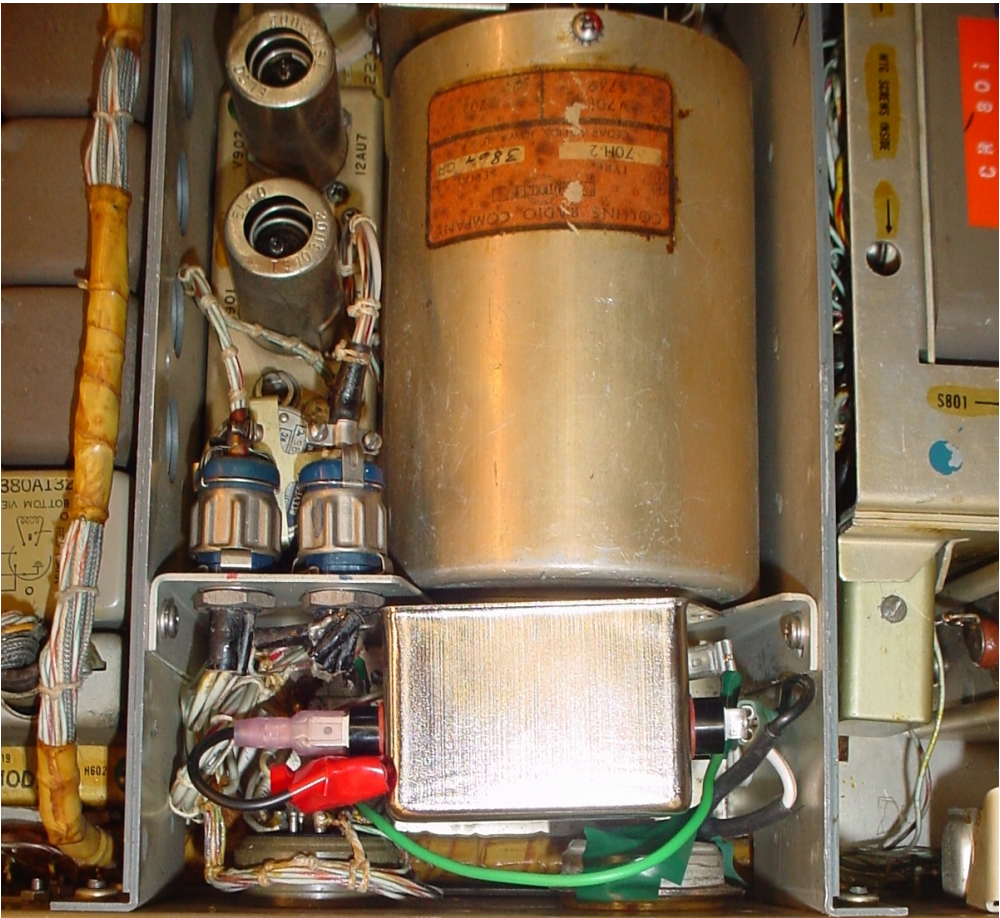
MADE IN CHINA

LOAD

0803 R

5





2024 6 18